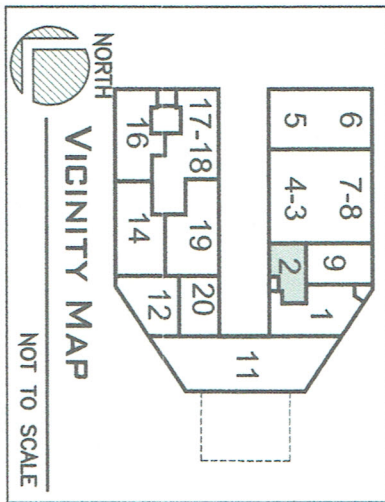
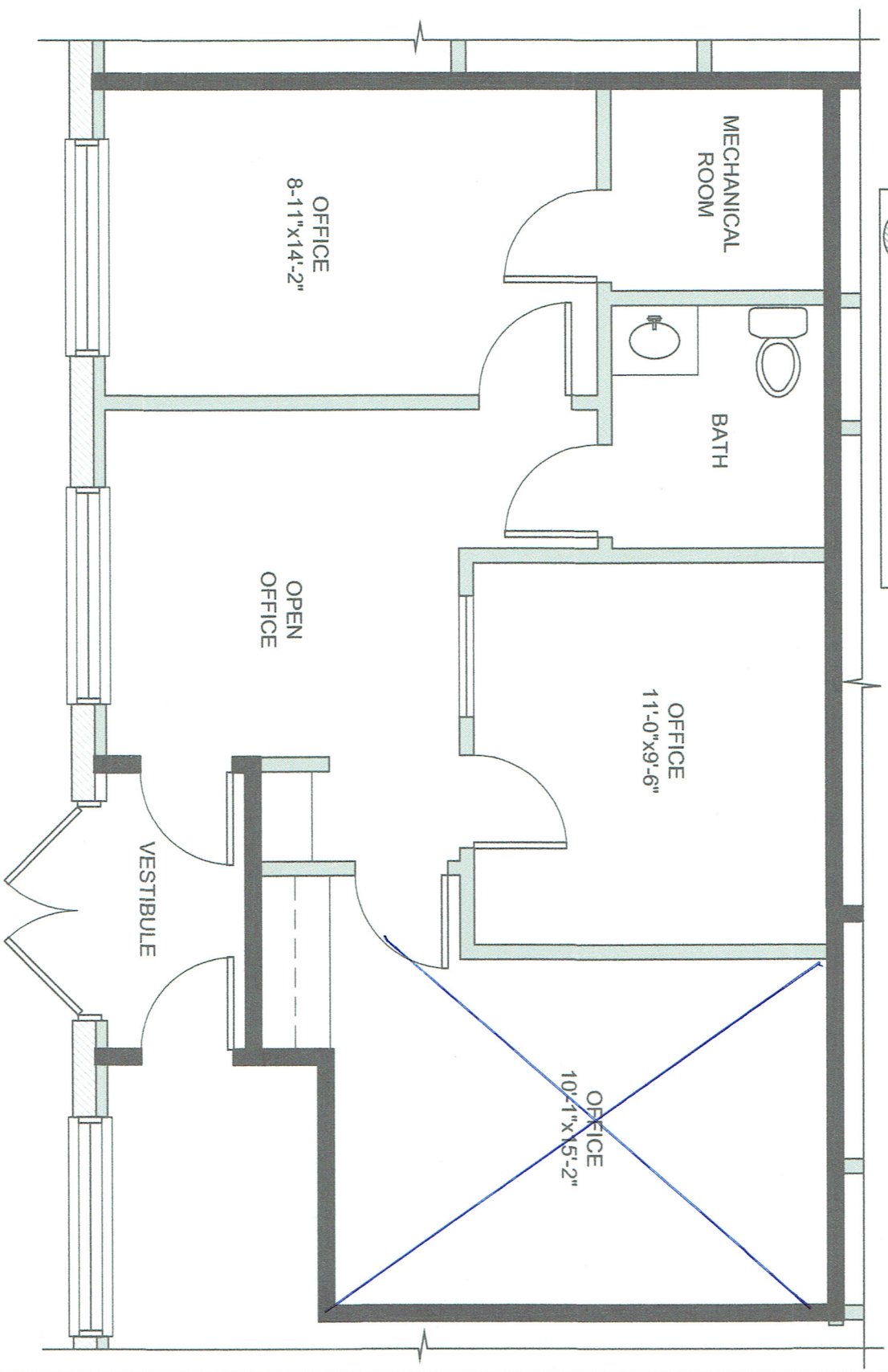


SUITE #: 2
 SIZE: 748 SQ. FT.
 BUILDING: TAYLOR CROSSING
 OFFICE PARK
 ADDRESS: 6233 BANKERS ROAD
 RACINE, WI 53403



565 s.f.



© 2010 NIELSEN BUILDING SYSTEMS
 NIELSEN BUILDING SYSTEMS

4820 SIX MILE ROAD
 RACINE, WI 53402

ARCHITECTS • ENGINEERS • CONTRACTORS • DEVELOPERS • PLANNERS