

EAGLE POINT
 BEING A PART OF THE NE 1/4 NW 1/4 AND
 SW 1/4 OF THE NW 1/4 OF SECTION 36, T 4 N,
 R 22 E. IN THE TOWN OF CALEDONIA, RACINE
 COUNTY, WISCONSIN.

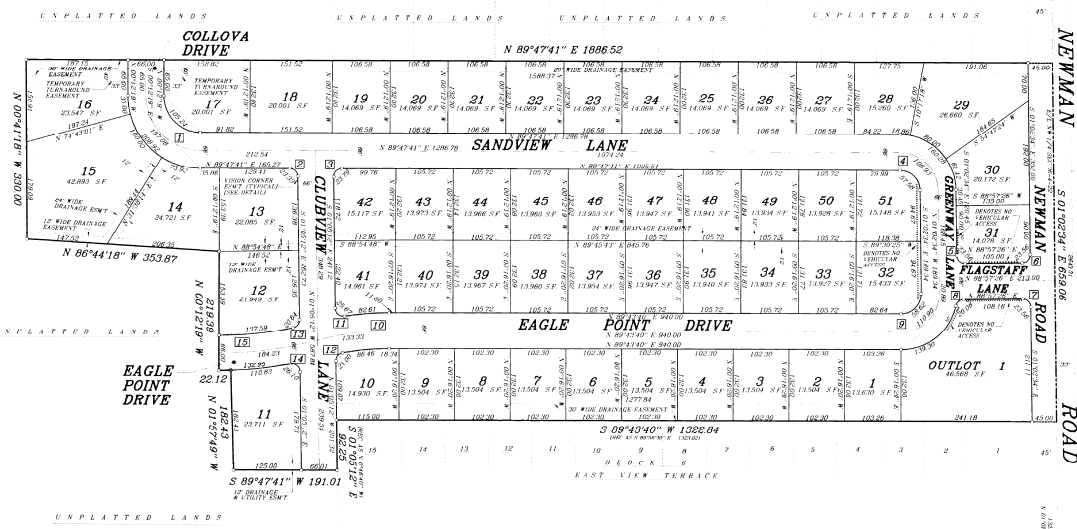
- NOTE
- 1) - BEARING 2"x30" IRON PIPE 3.65 LBS PER LINEAL FOOT
 - 2) 1"x4" IRON PIPE 1.13 LBS PER LINEAL FOOT AT ALL OTHER LOCATIONS
 - 3) ALL DISTANCES TO THE NEAREST 0.01'
 - 4) ALL BEARINGS ARE REFERRED TO GRID NORTH OF THE WISCONSIN STATE PLANE CO-ORDINATE SYSTEM SECTION 36 BEARING 2"00'00" E 1"04" 18"00"
 - 5) ALL AREAS ARE TO THE NEAREST SQUARE FOOT
 - 6) THERE SHALL BE NO DIRECT VEHICULAR ACCESS FROM LOTS 28, 30, 31 AND OUTLOT 1 TO NEWMAN ROAD
 - 7) EACH INDIVIDUAL LOT OWNERS SHALL HAVE AN EVIDENCE OF PROTIONAL OWNERSHIP TO OUTLOT 1
 - 8) THE DEVELOPER AND ALL SUBSEQUENT OWNERS SHALL TRANSFER TO ANY SUCCESSOR PURCHASER OF ANY DELIVERABLE LOT WITHIN THE SECTION AN EVIDENCE OF INTEREST IN OUTLOT 1
 - 9) THE DEVELOPER AND ALL SUBSEQUENT OWNERS WARRANT AND REPRESENT THAT SAID OUTLOT FOR ASSUMED PURPOSES WILL BE 10' WIDE PER SE, AND THE 1/2" INTEREST IN SAID OUTLOT SHOULD BE ASSIGNED WITH EACH OF THE DELIVERABLE LOTS
 - 10) IN THE EVENT THAT SAID OUTLOT IS NOT ASSSESSED AS ABOVE, THE DEVELOPER AND ALL SUBSEQUENT OWNERS WARRANT AND REPRESENT THAT EACH WILL PAY 1/2" PER BUILDABLE LOT OF THE TAXES DUE ON SAID OUTLOT IN THE EVENT THAT THESE SAID TAXES ARE NOT PAID, RACINE COUNTY RESERVE THE RIGHT TO COLLECT FROM EACH AND EVERY BUILDABLE OR SUBSEQUENT OWNER INDIVIDUALLY FOR ALL TAXES DUE.
 - 11) MAINTENANCE OF THE DRAINAGE POND ON OUTLOT 1 WILL BE THE RESPONSIBILITY OF THE SITE PROPERTY OWNERS WITHIN THE SECTION.



REVISED THIS 26TH DAY OF SEPTEMBER, 2000

METROPOLITAN ENGINEERING, INC.
 20075 CROSSROADS CIRCLE SUITE 100 W11000A1 WI 53186
 PH: (262) 792-2211 FAX: (262) 792-2212

There are no objections to this plat with respect to
 Secs. 236.15, 236.16, 236.20 and 236.21 (1) and (2),
 Wis. Stats.
 Certified *October 13th*, 2000
Merral Add
 Department of Administration



MAIN CURVE TABLE

#	Radius	Delta	Length	Chord	Chord Bearing	Tan In	Tan Out
1	67.00	90°00'00"	105.24	94.75	N 45°12'19" 0" E	0.00'12" 19" E	N 89°47'41" 1" E
2	100.00	90°00'00"	157.08	141.42	N 45°12'19" 0" E	0.00'12" 19" E	N 89°47'41" 1" E
3	145.00	90°00'00"	206.92	188.09	N 45°12'19" 0" E	0.00'12" 19" E	N 89°47'41" 1" E
4	200.00	90°00'00"	273.33	241.55	N 45°12'19" 0" E	0.00'12" 19" E	N 89°47'41" 1" E
5	260.00	90°00'00"	348.88	304.22	N 45°12'19" 0" E	0.00'12" 19" E	N 89°47'41" 1" E
6	330.00	90°00'00"	435.99	371.25	N 45°12'19" 0" E	0.00'12" 19" E	N 89°47'41" 1" E
7	410.00	90°00'00"	528.00	438.28	N 45°12'19" 0" E	0.00'12" 19" E	N 89°47'41" 1" E
8	500.00	90°00'00"	625.00	500.00	N 45°12'19" 0" E	0.00'12" 19" E	N 89°47'41" 1" E
9	600.00	90°00'00"	725.00	556.68	N 45°12'19" 0" E	0.00'12" 19" E	N 89°47'41" 1" E
10	720.00	90°00'00"	835.00	608.24	N 45°12'19" 0" E	0.00'12" 19" E	N 89°47'41" 1" E
11	870.00	90°00'00"	950.00	654.75	N 45°12'19" 0" E	0.00'12" 19" E	N 89°47'41" 1" E
12	1050.00	90°00'00"	1075.00	696.24	N 45°12'19" 0" E	0.00'12" 19" E	N 89°47'41" 1" E
13	1270.00	90°00'00"	1205.00	732.71	N 45°12'19" 0" E	0.00'12" 19" E	N 89°47'41" 1" E
14	1530.00	90°00'00"	1335.00	764.24	N 45°12'19" 0" E	0.00'12" 19" E	N 89°47'41" 1" E
15	1840.00	90°00'00"	1460.00	790.81	N 45°12'19" 0" E	0.00'12" 19" E	N 89°47'41" 1" E
16	2210.00	90°00'00"	1575.00	812.44	N 45°12'19" 0" E	0.00'12" 19" E	N 89°47'41" 1" E
17	2650.00	90°00'00"	1680.00	829.14	N 45°12'19" 0" E	0.00'12" 19" E	N 89°47'41" 1" E
18	3170.00	90°00'00"	1775.00	841.81	N 45°12'19" 0" E	0.00'12" 19" E	N 89°47'41" 1" E
19	3780.00	90°00'00"	1860.00	850.44	N 45°12'19" 0" E	0.00'12" 19" E	N 89°47'41" 1" E
20	4490.00	90°00'00"	1935.00	855.00	N 45°12'19" 0" E	0.00'12" 19" E	N 89°47'41" 1" E
21	5320.00	90°00'00"	2000.00	855.56	N 45°12'19" 0" E	0.00'12" 19" E	N 89°47'41" 1" E
22	6290.00	90°00'00"	2050.00	852.11	N 45°12'19" 0" E	0.00'12" 19" E	N 89°47'41" 1" E
23	7430.00	90°00'00"	2085.00	844.75	N 45°12'19" 0" E	0.00'12" 19" E	N 89°47'41" 1" E
24	8770.00	90°00'00"	2105.00	833.56	N 45°12'19" 0" E	0.00'12" 19" E	N 89°47'41" 1" E
25	10340.00	90°00'00"	2110.00	818.54	N 45°12'19" 0" E	0.00'12" 19" E	N 89°47'41" 1" E
26	12180.00	90°00'00"	2100.00	800.71	N 45°12'19" 0" E	0.00'12" 19" E	N 89°47'41" 1" E
27	14340.00	90°00'00"	2075.00	780.14	N 45°12'19" 0" E	0.00'12" 19" E	N 89°47'41" 1" E
28	16870.00	90°00'00"	2035.00	757.81	N 45°12'19" 0" E	0.00'12" 19" E	N 89°47'41" 1" E
29	19840.00	90°00'00"	1980.00	733.71	N 45°12'19" 0" E	0.00'12" 19" E	N 89°47'41" 1" E
30	23320.00	90°00'00"	1910.00	708.00	N 45°12'19" 0" E	0.00'12" 19" E	N 89°47'41" 1" E
31	27380.00	90°00'00"	1820.00	680.81	N 45°12'19" 0" E	0.00'12" 19" E	N 89°47'41" 1" E
32	32000.00	90°00'00"	1710.00	652.24	N 45°12'19" 0" E	0.00'12" 19" E	N 89°47'41" 1" E
33	37270.00	90°00'00"	1580.00	622.44	N 45°12'19" 0" E	0.00'12" 19" E	N 89°47'41" 1" E
34	43180.00	90°00'00"	1435.00	591.44	N 45°12'19" 0" E	0.00'12" 19" E	N 89°47'41" 1" E
35	49820.00	90°00'00"	1270.00	559.24	N 45°12'19" 0" E	0.00'12" 19" E	N 89°47'41" 1" E
36	57280.00	90°00'00"	1090.00	526.00	N 45°12'19" 0" E	0.00'12" 19" E	N 89°47'41" 1" E
37	65660.00	90°00'00"	900.00	491.81	N 45°12'19" 0" E	0.00'12" 19" E	N 89°47'41" 1" E
38	75060.00	90°00'00"	700.00	456.68	N 45°12'19" 0" E	0.00'12" 19" E	N 89°47'41" 1" E
39	85580.00	90°00'00"	500.00	420.71	N 45°12'19" 0" E	0.00'12" 19" E	N 89°47'41" 1" E
40	97320.00	90°00'00"	300.00	384.00	N 45°12'19" 0" E	0.00'12" 19" E	N 89°47'41" 1" E
41	110380.00	90°00'00"	100.00	346.68	N 45°12'19" 0" E	0.00'12" 19" E	N 89°47'41" 1" E
42	124860.00	90°00'00"	0.00	308.81	N 45°12'19" 0" E	0.00'12" 19" E	N 89°47'41" 1" E

LOT CURVE TABLE

#	Radius	Delta	Length	Chord	Chord Bearing	Tan In	Tan Out
1	720.00	90°00'00"	105.24	94.75	N 45°12'19" 0" E	0.00'12" 19" E	N 89°47'41" 1" E
2	100.00	90°00'00"	157.08	141.42	N 45°12'19" 0" E	0.00'12" 19" E	N 89°47'41" 1" E
3	145.00	90°00'00"	206.92	188.09	N 45°12'19" 0" E	0.00'12" 19" E	N 89°47'41" 1" E
4	200.00	90°00'00"	273.33	241.55	N 45°12'19" 0" E	0.00'12" 19" E	N 89°47'41" 1" E
5	260.00	90°00'00"	348.88	304.22	N 45°12'19" 0" E	0.00'12" 19" E	N 89°47'41" 1" E
6	330.00	90°00'00"	435.99	371.25	N 45°12'19" 0" E	0.00'12" 19" E	N 89°47'41" 1" E
7	410.00	90°00'00"	528.00	438.28	N 45°12'19" 0" E	0.00'12" 19" E	N 89°47'41" 1" E
8	500.00	90°00'00"	625.00	500.00	N 45°12'19" 0" E	0.00'12" 19" E	N 89°47'41" 1" E
9	600.00	90°00'00"	725.00	556.68	N 45°12'19" 0" E	0.00'12" 19" E	N 89°47'41" 1" E
10	720.00	90°00'00"	835.00	608.24	N 45°12'19" 0" E	0.00'12" 19" E	N 89°47'41" 1" E
11	870.00	90°00'00"	950.00	654.75	N 45°12'19" 0" E	0.00'12" 19" E	N 89°47'41" 1" E
12	1050.00	90°00'00"	1075.00	696.24	N 45°12'19" 0" E	0.00'12" 19" E	N 89°47'41" 1" E
13	1270.00	90°00'00"	1205.00	732.71	N 45°12'19" 0" E	0.00'12" 19" E	N 89°47'41" 1" E
14	1530.00	90°00'00"	1335.00	764.24	N 45°12'19" 0" E	0.00'12" 19" E	N 89°47'41" 1" E
15	1840.00	90°00'00"	1460.00	790.81	N 45°12'19" 0" E	0.00'12" 19" E	N 89°47'41" 1" E
16	2210.00	90°00'00"	1575.00	812.44	N 45°12'19" 0" E	0.00'12" 19" E	N 89°47'41" 1" E
17	2650.00	90°00'00"	1680.00	829.14	N 45°12'19" 0" E	0.00'12" 19" E	N 89°47'41" 1" E
18	3170.00	90°00'00"	1775.00	841.81	N 45°12'19" 0" E	0.00'12" 19" E	N 89°47'41" 1" E
19	3780.00	90°00'00"	1860.00	850.44	N 45°12'19" 0" E	0.00'12" 19" E	N 89°47'41" 1" E
20	4490.00	90°00'00"	1935.00	855.00	N 45°12'19" 0" E	0.00'12" 19" E	N 89°47'41" 1" E
21	5320.00	90°00'00"	2000.00	855.56	N 45°12'19" 0" E	0.00'12" 19" E	N 89°47'41" 1" E
22	6290.00	90°00'00"	2050.00	852.11	N 45°12'19" 0" E	0.00'12" 19" E	N 89°47'41" 1" E
23	7430.00	90°00'00"	2085.00	844.75	N 45°12'19" 0" E	0.00'12" 19" E	N 89°47'41" 1" E
24	8770.00	90°00'00"	2105.00	833.56	N 45°12'19" 0" E	0.00'12" 19" E	N 89°47'41" 1" E
25	10340.00	90°00'00"	2110.00	818.54	N 45°12'19" 0" E	0.00'12" 19" E	N 89°47'41" 1" E
26	12180.00	90°00'00"	2100.00	800.71	N 45°12'19" 0" E	0.00'12" 19" E	N 89°47'41" 1" E
27	14340.00	90°00'00"	2075.00	780.14	N 45°12'19" 0" E	0.00'12" 19" E	N 89°47'41" 1" E
28	16870.00	90°00'00"	2035.00	757.81	N 45°12'19" 0" E	0.00'12" 19" E	N 89°47'41" 1" E
29	19840.00	90°00'00"	1980.00	733.71	N 45°12'19" 0" E	0.00'12" 19" E	N 89°47'41" 1" E
30	23320.00	90°00'00"	1910.00	708.00	N 45°12'19" 0" E	0.00'12" 19" E	N 89°47'41" 1" E
31	27380.00	90°00'00"	1820.00	680.81	N 45°12'19" 0" E	0.00'12" 19" E	N 89°47'41" 1" E
32	32000.00	90°00'00"	1710.00	652.24	N 45°12'19" 0" E	0.00'12" 19" E	N 89°47'41" 1" E
33	37270.00	90°00'00"	1580.00	622.44	N 45°12'19" 0" E	0.00'12" 19" E	N 89°47'41" 1" E
34	43180.00	90°00'00"	1435.00	591.44	N 45°12'19" 0" E	0.00'12" 19" E	N 89°47'41" 1" E
35	49820.00	90°00'00"	1270.00	559.24	N 45°12'19" 0" E	0.00'12" 19" E	N 89°47'41" 1" E
36	57280.00	90°00'00"	1090.00	526.00	N 45°12'19" 0" E	0.00'12" 19" E	N 89°47'41" 1" E
37	65660.00	90°00'00"	900.00	491.81	N 45°12'19" 0" E	0.00'12" 19" E	N 89°47'41" 1" E
38	75060.00	90°00'00"	700.00	456.68	N 45°12'19" 0" E	0.00'12" 19" E	N 89°47'41" 1" E
39	85580.00	90°00'00"	500.00	420.71	N 45°12'19" 0" E	0.00'12" 19" E	N 89°47'41" 1" E
40	97320.00	90°00'00"	300.00	384.00	N 45°12'19" 0" E	0.00'12" 19" E	N 89°47'41" 1" E
41	110380.00	90°00'00"	100.00	346.68	N 45°12'19" 0" E	0.00'12" 19" E	N 89°47'41" 1" E
42	124860.00	90°00'00"	0.00	308.81	N 45°12'19" 0" E	0.00'12" 19" E	N 89°47'41" 1" E

