

ARROWHEAD SOUTH
SUBDIVISION STORM WATER
ASSOCIATION

Rules:

1. The properties surrounding the storm water pond (drainage basin) are the private property of the Arrowhead South Subdivision Storm Water Association members only.
2. The rules may only be changed when an Association is formed, it can be established when 75% of the lots around the pond are sold.
3. Power boats, four wheelers, snowmobiles or recreational vehicles may not be driven on the water or the property surrounding the pond.
4. Storage of wood, other materials or equipment on the property surrounding the pond is not permitted.
5. You may mow the grass to the waters edge.
6. No plantings of trees or bushes shall be made between your lot and the waters edge without permission from the Association. (Until 75% of the properties around the pond are sold, the persons to contact for permission would be Leland or John Stohr, phone 262-877-2884).

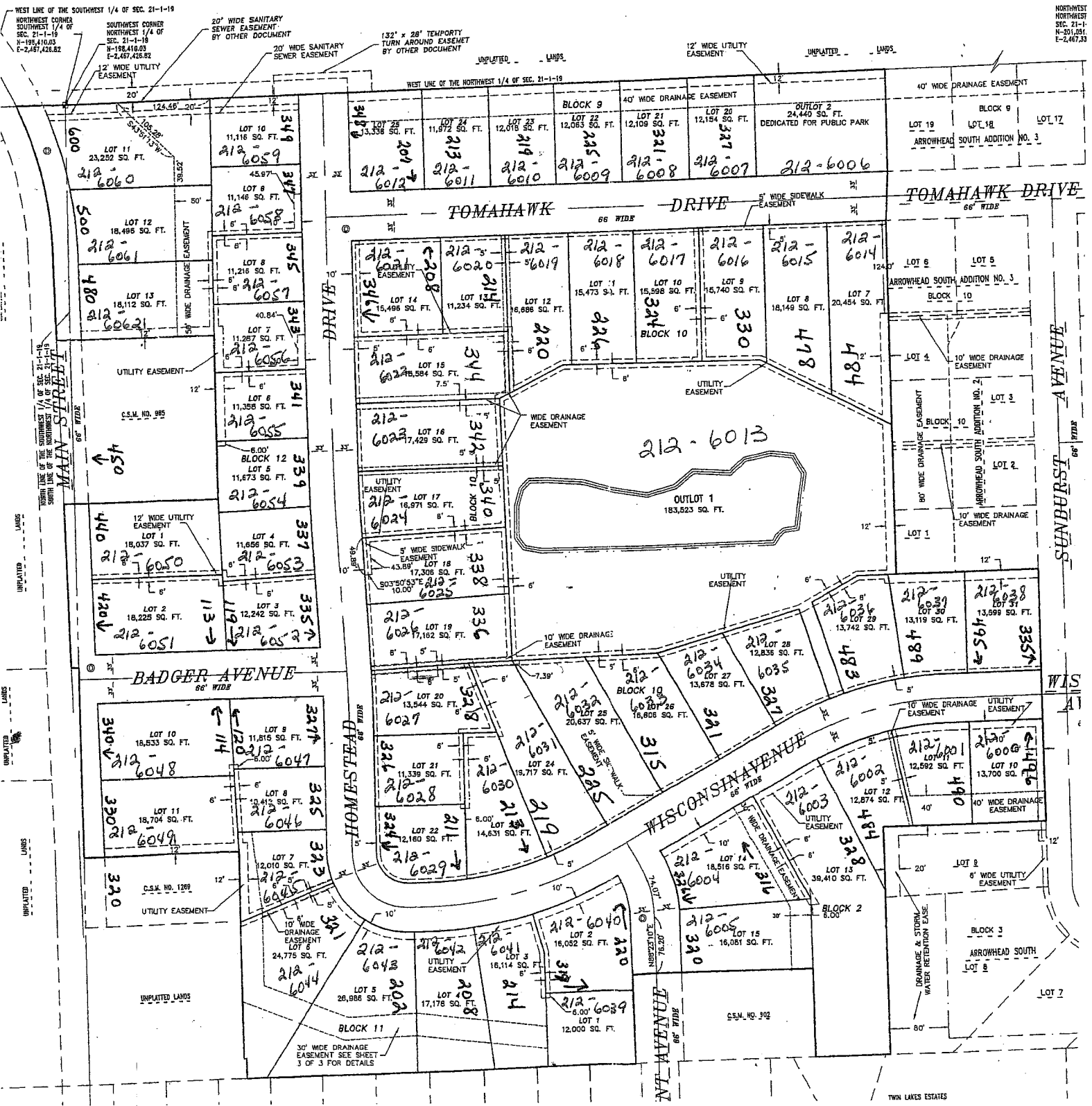


Leland Stohr

Date: 3-5-08

ARROWHEAD SOUTH ADDITION NO. 4

BEING A PART OF LANDS IN THE SOUTHEAST 1/4
AND SOUTHWEST 1/4 OF THE NORTHWEST 1/4 AND
PART OF THE NORTHWEST 1/4 OF THE
SOUTHWEST 1/4 OF SECTION 21, TOWNSHIP 1
NORTH, RANGE 19 EAST, VILLAGE OF TWIN
LAKES, KENOSHA COUNTY, WISCONSIN.



NORTHWEST
CORNER
SECTION 21-1-19
N-186,410.03
E-2,467,426.82

WEST LINE OF THE SOUTHWEST 1/4 OF SEC. 21-1-19
NORTHWEST CORNER
SOUTHWEST 1/4 OF
SEC. 21-1-19
N-186,410.03
E-2,467,426.82

UNIMPROVED LANDS
UNIMPROVED LANDS
UNIMPROVED LANDS

SUNBURST AVENUE
66' WIDE

WISCONSIN AVENUE
66' WIDE

ADDITION NO. 4